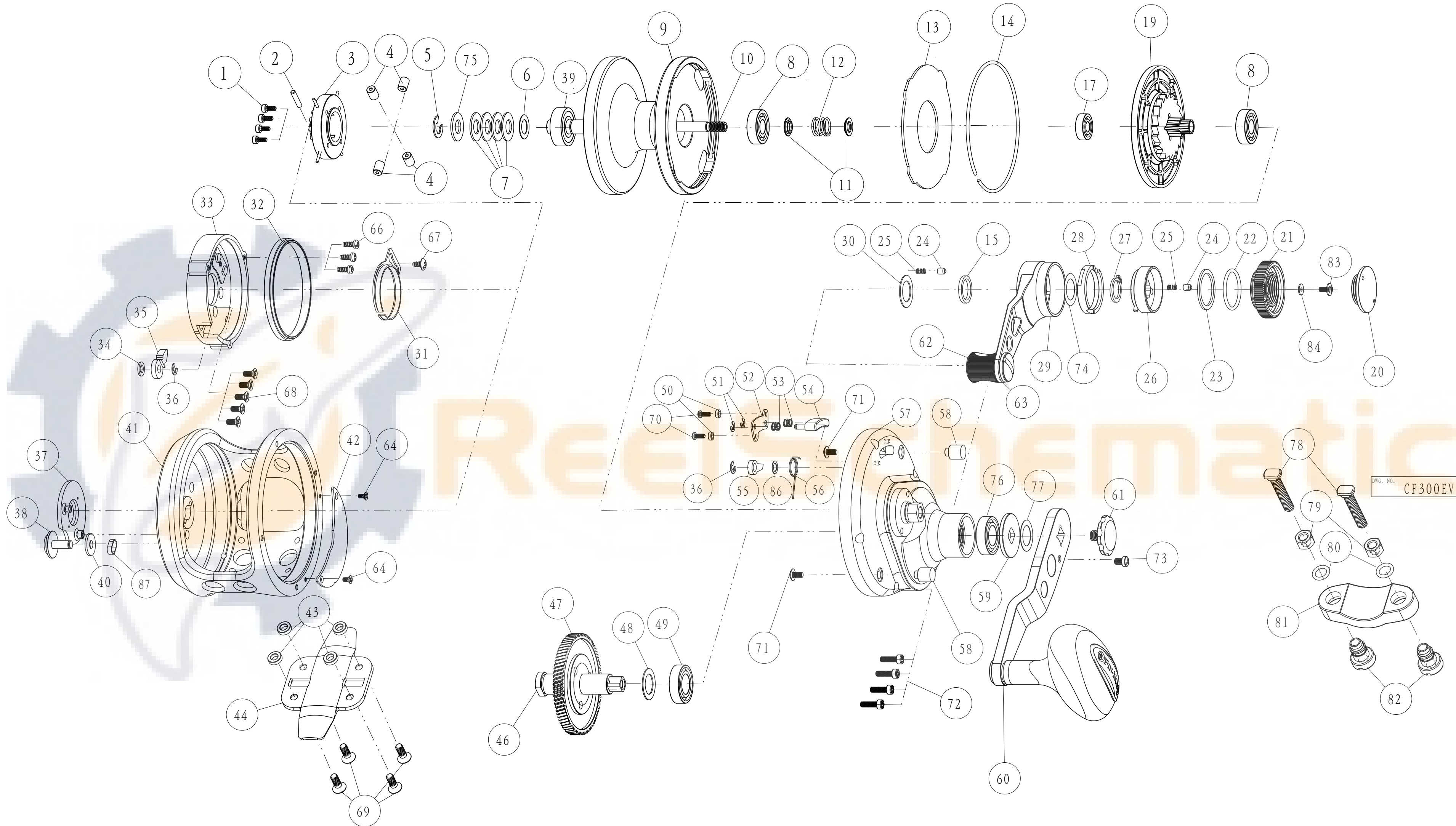


MA12 & MA16 EXPLODED VIEW



DWG. NO. CF300EVIEW REV.

DIMENSIONS AND TOLERANCES PER ISO DO NOT SCALE DRAWING		TOLERANCES EXCEPT AS NOTED ANGLES TOLERANCE OTHERS PER PROCESS STANDARD ALL DIM. ARE IN MILLIMETERS		W.C. BRADLEY /ZEBCO HOLDINGS, INC P.O. BOX 270 TULSA, OKLAHOMA	
PROPRIETARY NOTICE FOR DOCUMENTS This document and the information thereon is the confidential property of ZEBCO Corporation. Reproduction or use of this document or the information hereon for any purpose without the express written consent of ZEBCO Corporation is strictly prohibited.				PART NAME EXPLODE VIEW	
NOTATION SYMBOLS		DWN. BY: HG KIM DATE: 05-14-07		MODEL NAME: CF300	
<ul style="list-style-type: none"> Flatness Straightness Circularity Cylindricity Surface Profile Line Profile Parallelism 		<ul style="list-style-type: none"> Perpendicularity Angularity Total Runout True Position Concentricity Diameter 		SCALE: 0.167 SHEET 1 OF 1	
				DRW. No.: CF300EVIEW	

FinNor Marquesa Lever Drag

Key No.	Description	Part No.				Key No.	Description	Part No.			
		MA12	MA16	MA20	MA30			MA12	MA16	MA20	MA30
1	Screw	DF053-01	↔	↔	↔	48	Adjustment Washer	DF035-01	↔	↔	↔
2	Spool Shaft Pin	DF093-01	↔	↔	↔	49	Ball Bearing	CF017-03	↔	↔	↔
3	Bait Click Ratchet Assembly	BF329-01	↔	DF329-01	↔	50	Spacer	CF081-01	↔	↔	↔
4	Brake Shoe	CF044-01	↔	↔	↔	51	E-Ring	NX090-01	↔	↔	↔
5	E-Ring	QW120-01	↔	DF092-01	↔	52	Strike Button Plate	BF078-01	↔	CF078-01	↔
6	Washer	BF121-01	↔	CF121-01	↔	53	Strike Button Pin Spring	CF022-01	↔	↔	↔
7	Drag Spring	BF046-01	↔	JF046-01	↔	54	Strike Button	BF062-01	↔	CF062-01	↔
8	Ball Bearing	CF117-01	↔	KF017-02	↔	55	Anti Reverse Pawl	DF063-02	↔	↔	↔
9	Spool Assembly	BF321-01	HF321-01	CF021-01	DF021-01	56	Stoper Spring	BF096-01	↔	CF096-01	↔
10	Spool Shaft	BF015-01	HF015-01	CF015-01	DF015-01	57	Gear Side Cover Assembly	BF324-01	↔	DF324-01	↔
11	Collar	BF094-01	↔	↔	↔	571	Gear Side Cover	BF024-01	↔	CF024-01	↔
12	Spring	CF040-01	↔	↔	↔	572	One Way Bearing	TQ063-02	↔	↔	↔
13	Drag Disc	BF059-01	↔	CF059-01	↔	573	Anti Reverse Pawl Post	CF102-01	↔	↔	↔
14	Ring	BF080-01	↔	CF080-01	↔	574	Pin	GX095-01	↔	N/A	N/A
15	Bushing	DF017-01	↔	↔	↔	58	Locating Collar	DF118-01	↔	↔	↔
17	Ball Bearing	CF117-01	↔	↔	↔	59	Handle Washer	HF054-01	↔	DF054-01	↔
19	Pinion Assembly	HF311-01	↔	DF311-01	↔	60	Handle Arm Assembly	BF318-02	↔	CF318-01	↔
20	Pre Set Knob Cover	CF110-01	↔	↔	↔	61	Handle Nut	BF003-02	↔	CF003-01	↔
21	Pre Set Knob	CF029-01	↔	↔	↔	62	Drag Knob	CF055-01	↔	↔	↔
22	O-Ring	CF101-01	↔	↔	↔	63	Drag Knob Screw	DF125-01	↔	↔	↔
23	Friction Washer	DF121-01	↔	↔	↔	64	Screw	CF107-01	↔	↔	↔
24	Click Pin	CF098-01	↔	↔	↔	66	Tapping Screw	N/A	N/A	WW107-01	↔
25	Click Spring	DF114-01	↔	↔	↔	67	Tapping Screw	QW125-02	↔	↔	↔
26	Drag Cam B Assembly	CF353-01	↔	↔	↔	68	Screw	TW107-04	↔	↔	↔
27	Retaining Ring	JF075-01	↔	↔	↔	69	Screw	DF065-01	↔	DF065-02	DF065-03
28	Drag Cam A	CF028-01	↔	↔	↔	70	Screw	LF057-01	↔	↔	↔
29	Drag Lever	BF055-01	↔	DF055-01	↔	71	Screw	QW123-01	↔	↔	↔
30	Drag Lever Washer	DF038-01	↔	↔	↔	72	Side Cover Screw	CF053-01	↔	↔	↔
31	Click Spring	DF022-01	↔	↔	↔	73	Handle Nut Screw	CF065-01	↔	↔	↔
32	Brake Ring	BF042-01	↔	CF042-01	↔	74	Adjustment Washer	CF038-01	↔	↔	↔
33	Brake Ring Holder	HF129-01	↔	CF129-01	↔	75	Collar	BF081-01	↔	DF081-01	↔
34	Bait Click Lever Washer B	CF035-01	↔	↔	↔	76	Ball Bearing	TW058-01	↔	CF017-01	↔
35	Bait Click Pawl	DF109-02	↔	↔	↔	77	Adjustment Washer	ZW032-05	↔	DF032-01	↔
36	E-Ring	NX092-01	↔	↔	↔	78	Rod Clamp Bolt	EM125-01	EM125-01	CF125-01	↔
37	Badge	CF148-02	↔	CF148-01	↔	79	Nut	N/A	N/A	JF003-01	↔
38	Bait Click Lever	BF109-01	↔	CF109-01	↔	80	O-Ring	LF101-01	↔	↔	↔
39	Ball Bearing	HF017-01	↔	VF017-01	↔	81	Rod Clamp	CF154-01	↔	↔	↔
40	Bait Click Lever Washer A	BF032-01	↔	CF032-01	↔	82	Rod Clamp Nut	CF161-01	↔	↔	↔
41	Frame	BF001-01	HF001-01	CF001-01	DF001-01	83	Screw	BAA135-03	↔	CX076-04	↔
42	Drive Gear Cover	BF143-01	↔	CF143-01	↔	84	Washer	QV121-01	↔	N/A	N/A
43	Spacer	CF094-01	↔	↔	↔	85	Ball Bearing	BF017-01	↔	KF017-02	↔
44	Reel Foot	HF106-01	↔	CF106-01	↔	86	Mylar Washer	BAA076-01	↔	↔	↔
46	Crank Shaft	BF008-02	↔	CF008-02	↔	87	Bait Click Lever Bushing	CM088-01	↔	↔	↔
47	Drive Gear	BF012-01	↔	CF012-01	↔						

- B 2/5/2010 Key No. 27 part No. change to JF075 from CF075 (remove duplication part No.)
- C 2-Nov-10 Update
- D 28-Dec-10
- E 1-Sep-11 Update
- F 6-Oct-11 Revision ECR-R094 & ECN-F945
- G 12-Jun-12 ECN-F962
- H 22-Aug-13 ECN00034
- J 27-Sep-13 ECN00039
- K 18-Oct-16 ECN00135
- L 17-Nov-17 ECN_F1161: Correct the part number of MA20/30 Gear side cover assembly to keep same as BOM, was CF324-01;
- M 22-Dec-17 ECN F1166 : Rod Clamp Bolt Change